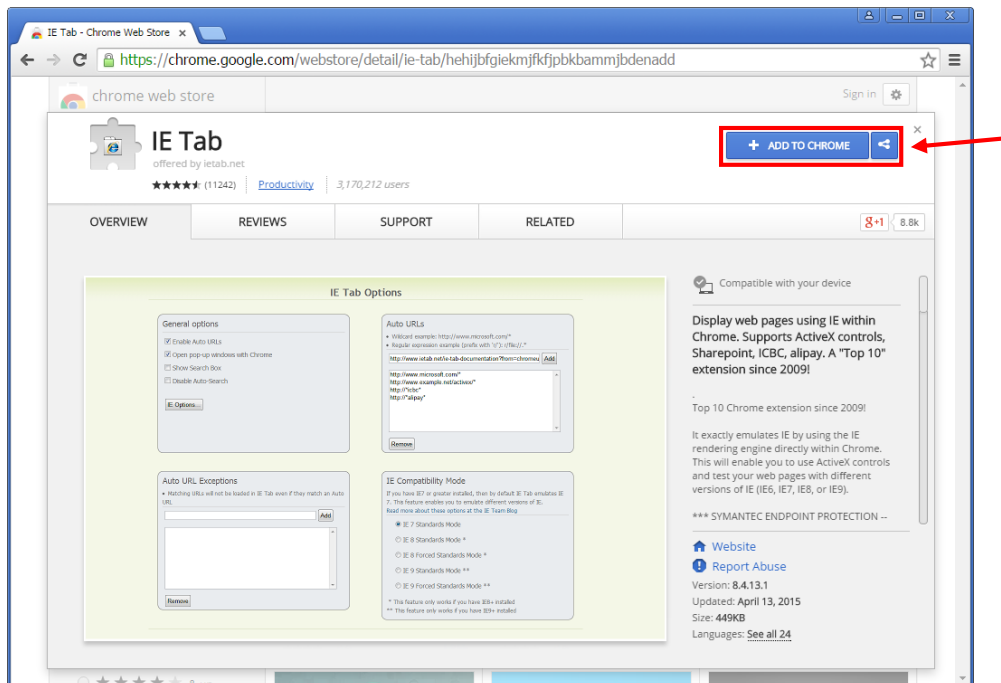


How to access trutrak using Google Chrome?

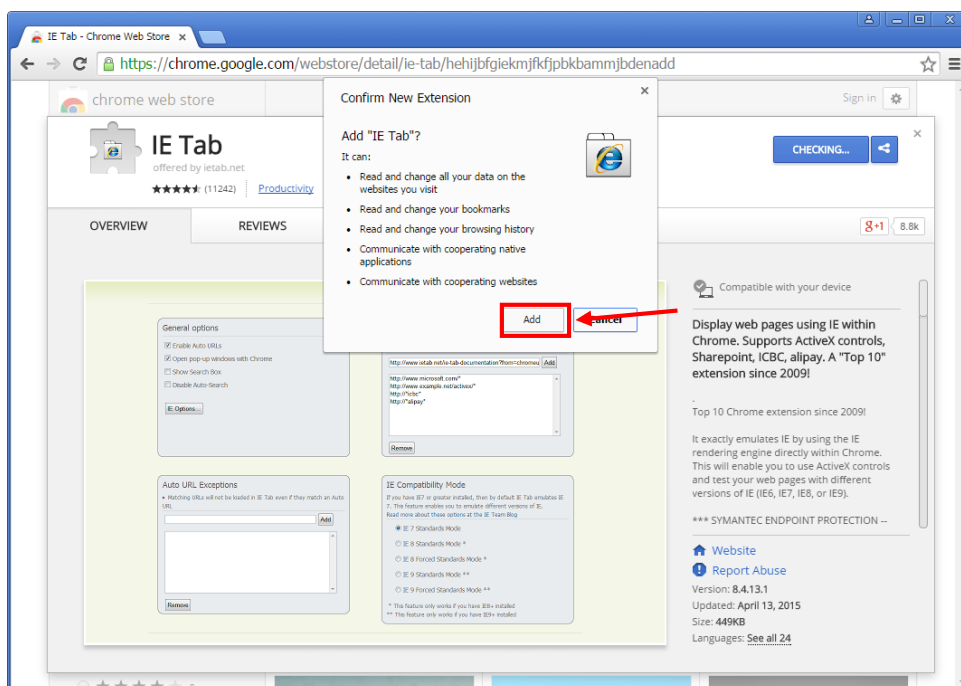
- 1) Go to <http://www.ietab.net/>



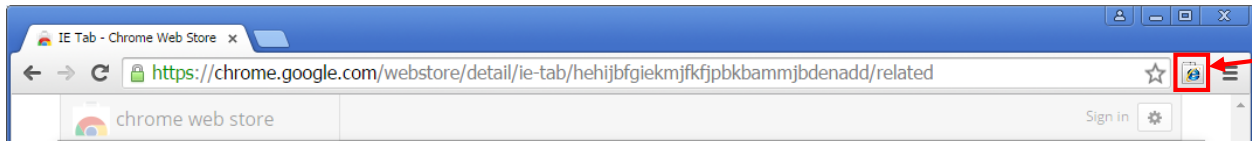
- 2) Click "Get IE Tab for Chrome"
- 3) Click "Add to Chrome"



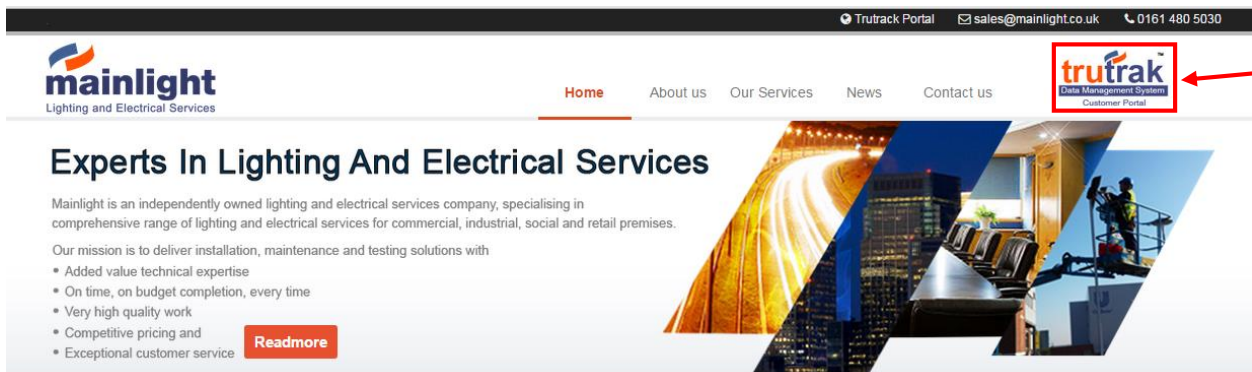
- 4) Click Add



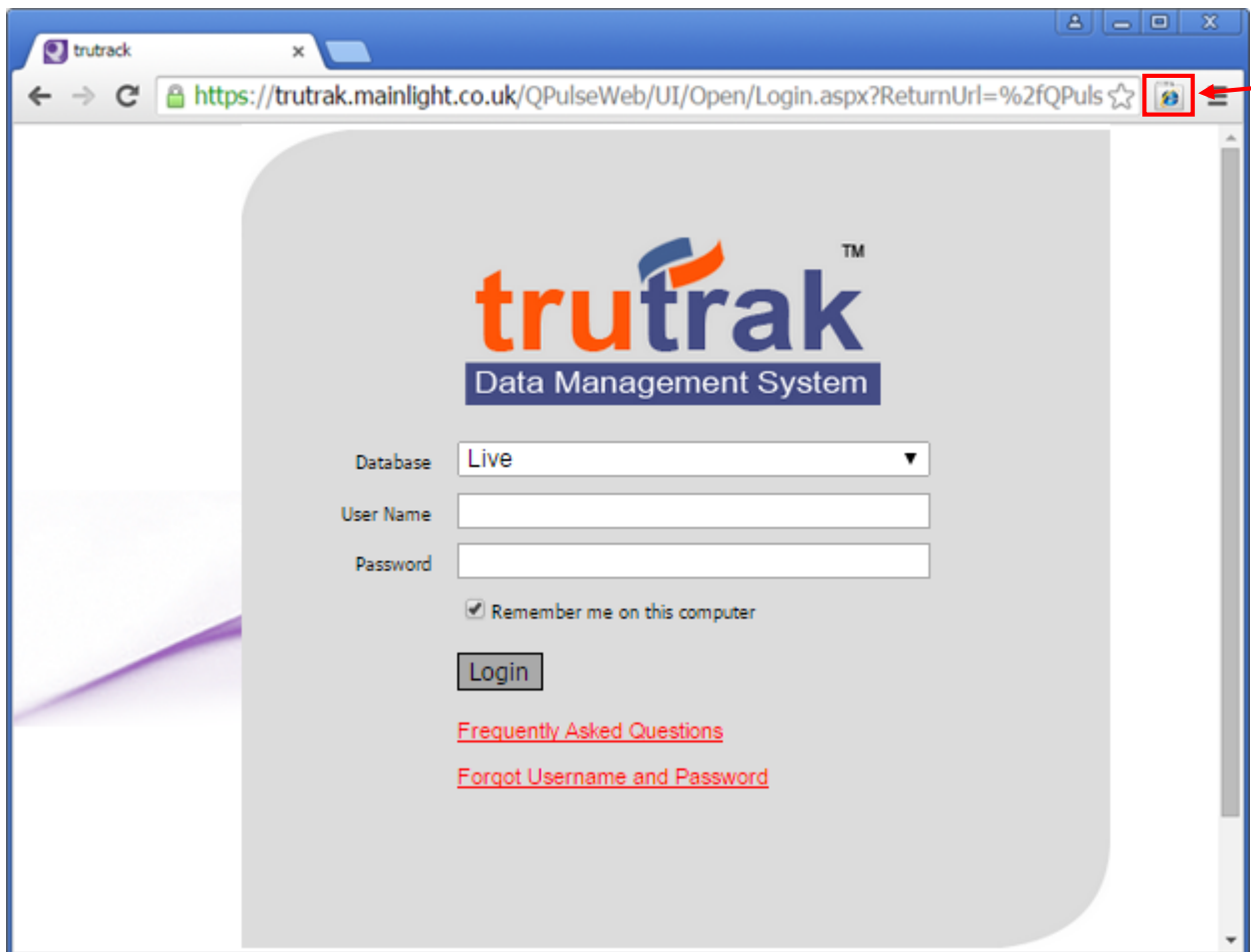
5) Once IE Tab add-on installed you should be able to see IE Tab icon at Google Chrome Toolbar



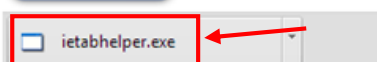
6) Go to www.mainlight.co.uk and click trutrak icon.



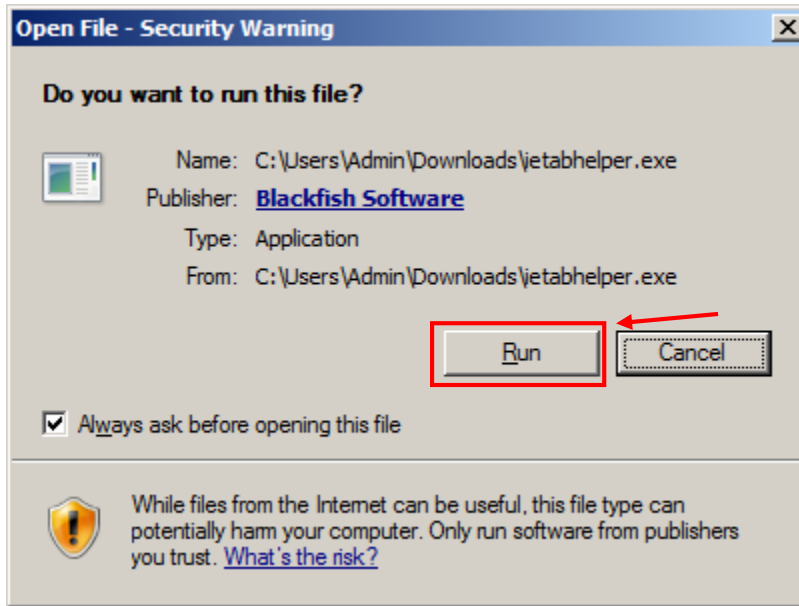
7) Click at IE Tab icon.



Click etabhelper.exe to launch the IE Tab helper installer.



8) Click on "Run" to run the helper installer



9) trutrak page will re-load when the IE Tab Helper has successfully installed. You will see new IE Tab address bar as highlighted in below screenshot. Login using your username and password. If you encounter any problems, please contact us at sales@mainlight.co.uk

